



VICTORIA VITOLA

SCENIC & PRODUCTION DESIGN

SCENIC DESIGN

JAMES & THE GIANT PEACH

The Don Powell Theatre | San Diego State University
2019

Director | Stephen Brotebeck
Musical Director | Robert Meffe
Scenic Designer | Victoria Vitola
Costume Designer | Brooke Nicole Kesler
Lighting Designer | Sarah Schwartz
Projection Designer | Scott Boynton
Sound Designer | Nolan Voge
Technical Director | Dustin Ozment



Photo Credit: Ken Jacques

A bizarre and magical story of a young boy's adventure on a giant peach with his new life-size insect friends!

Selected Research Imagery



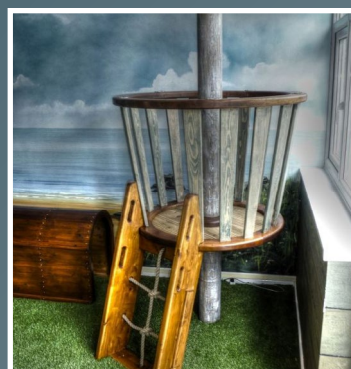
The House that Jack Built by Gary Walton



Children's Forts



Lotte Reinger Shadow Puppetry from The Fairy Tale Films



Children's Tree Houses

Selected Preliminary Storyboard Sketches

2D ENGLAND "HOUSES" / TOWN
 TRACK ON → INCLUDE GIFT SHOP

HOUSE ON HILL
 *DO S+S enter/exit on their motorcycle to garden

PEACH TREE
 CREEPY GATE

2D MOTORCYCLE TRACE ON PRLETTE | ATROCIOUS AUNTIES

TRAIN PROJECTION FOR SCOTT!
 JAMES' ARRIVAL

DECREDIT GARDEN

TRACE ON IN DIFFERENT PLANES

WHEN THEY EXIT; 2D BIKE IS PICKED UP + TURNED AROUND? IS THAT FUNNY?

HOW BIG SHOULD WE GO? ON CLIFFS / HILLS LIKE DOVE?

THIS MAY BE THE PEACH TREE ARM? COULD BEND IN?

A WELL?

ACCORDIAN WEEDS? ON DIFFERENT PLAYS?

MAYBE DURING "SHAKE IT UP" WHEN GARDEN COMES TO LIFE THE WEEDS DEAD CUT OUTS MOVE BACK + FORTH?

SKY DROP

OCEAN GROUND ROW

GARDEN TRACES OFF BIT BY BIT AS PEACH GROWS

PEACH GROWS OPTION #1

SHADOW PUPPET SCREEN? AS PUPPET MOVES TOWARDS LIGHT SOURCE, IT GETS BIGGER

PEACH GROWS OPTION #2

MAYBE PEACH TREE CUT OUT IS A BIT MORE CENTER, + THE GROWING IS PROJECTED! AS PEACH GROWS, PIECES TRACK OFF

HUGE PEACH REVEAL

PRINTED DROP PIES OFF
 SLOWLY BRANCH
 3D PEACH ON PLATFORM W/ TURNABLE

INSECT-ROBUSTION

MIDDLE OF A MOMENT "STOP TO LOOK, IT'S ALL AROUND"

TWINKLE LIGHTS DIM
 LIGHT UP DOOR

MIDDLE OF A MOMENT "KEEP MOVING THROUGH..."

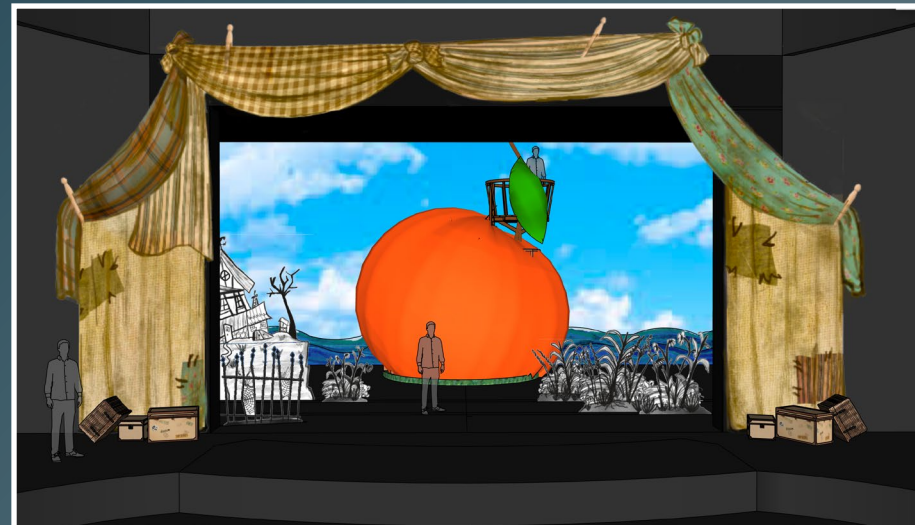
TWINKLE LIGHTS FULL POWER
 PEACH ROTATES (W/ JAMES INSIDE)

10'5" (7' DISS) (11' DISS)

MUST BE LARGE ENOUGH FOR 2 PEOPLE

11/19/18

Preliminary SketchUp Model



1/4" Model



1/2" Peach Model

Selected Paint Elevation (Hand Drawn & Digitally Painted with WACOM Tablet)



12'-0"

2 SL BOARDWALK CUT OUT ELEVATION

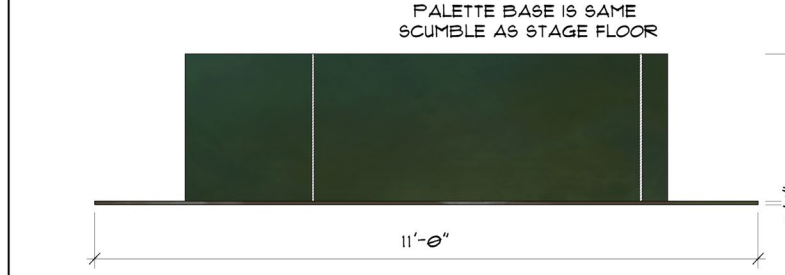


9'-0"

1 SR BOARDWALK CUT OUT ELEVATION



12'-0"



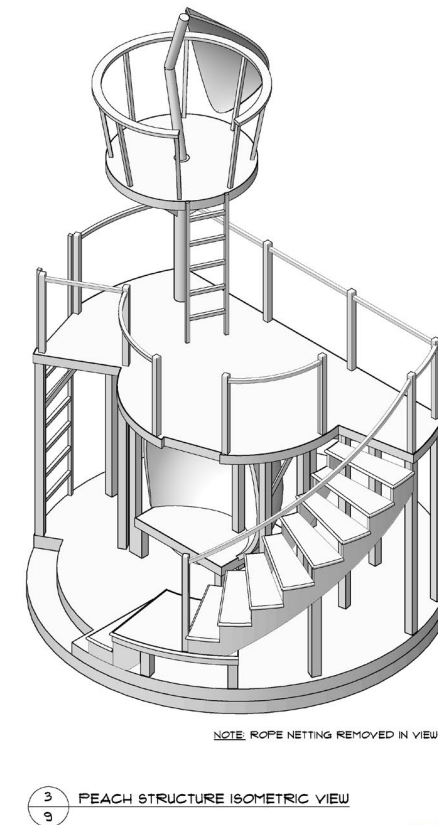
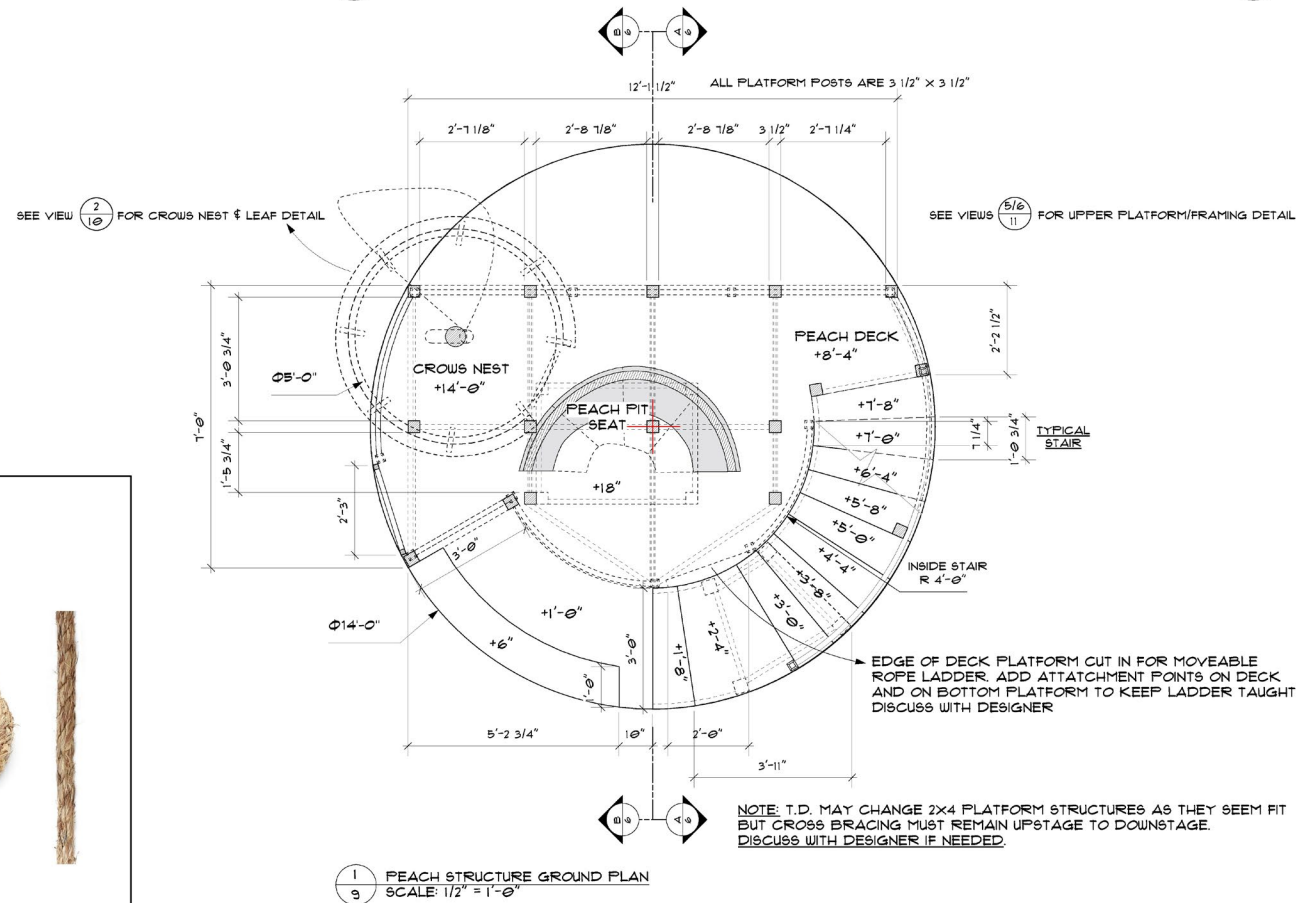
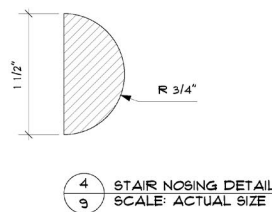
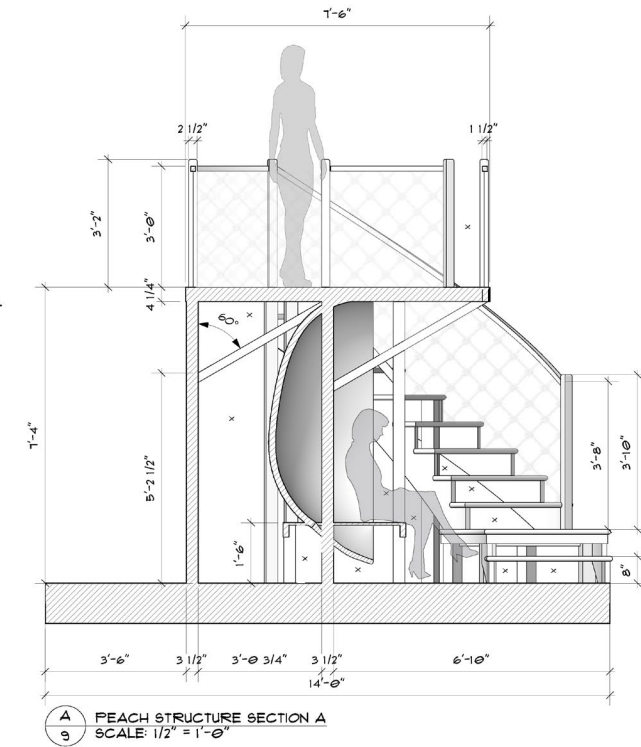
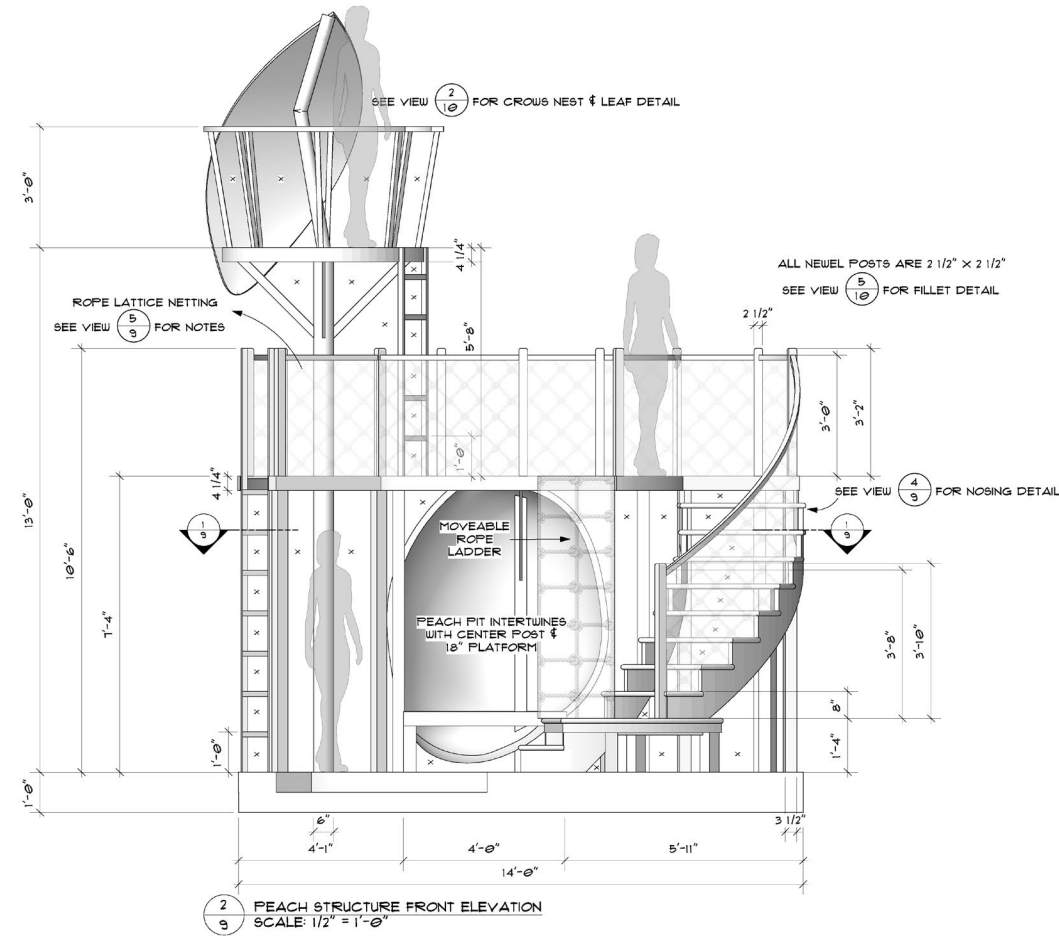
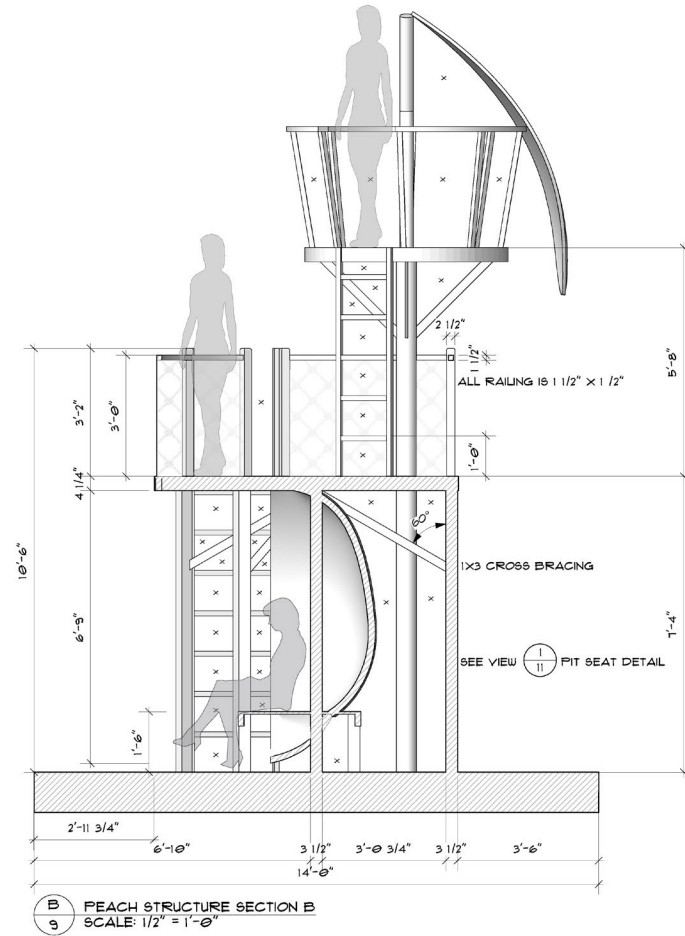
3 AUNT'S HOUSE FRONT ELEVATION

NOTES:
 - ALL EDGES OF CUT OUTS CARRY OVER COLOR FROM FRONT
 - UNITS HAVE SATIN FINISH

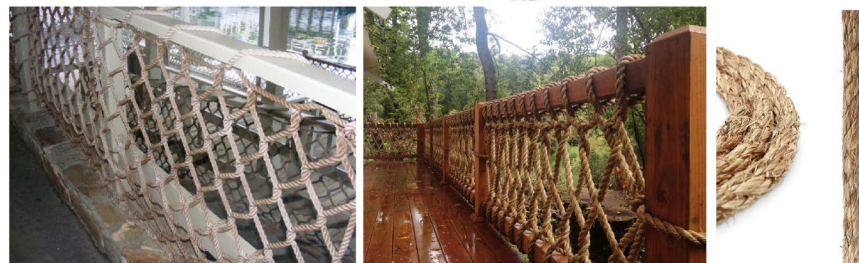
REDUCED

San Diego State Presenters presents		SHEET NO.
James & the Giant Peach		4
DRAWING: BOARDWALK CUT OUTS/AUNT'S HOUSE		12
DIRECTOR: Stephen Brotebeck		
DESIGNER: Victoria Vitola		
PAINT CHARGE: Kristen Flores		
SCALE: NOT TO SCALE	DATE: 02/15/19	

Drafting Sample (Modeled & Drawn in Vectorworks 3D)



NOTE:
 -ROPE CAN BE 1/2"-3/4" KNOTTED MANILLA OR POLYESTER ROPE
 -COLOR SHOULD BE NATURAL/BAND
 -DIAMOND MESH SIZE FOR RAILING NETTING SHOULD ROUGHLY BE 10"
 -SQUARE MESH SIZE FOR ROPE LADDER SHOULD ROUGHLY BE 1'-0"
 -ROPE CAN ATTACH IN LOOP OVER TOP OF RAILING (SEE PIC BELOW)
 -DISCUSS WITH DESIGNER



Victoria Vitola
(602) 909-9736
victoriavitola@me.com

DRAWING: PEACH STRUCTURE	
SCALE: 1/2" = 1'-0" (OR AS NOTED)	REVISIONS:
DATE: 02/17/19	DIRECTOR: Stephen Brobeck
DRAFTED BY: VMV	DESIGNER: Victoria Vitola
	TECHNICAL DIRECTOR: Dustin Ozment

San Diego State University presents
JAMES & THE GIANT PEACH



OF 17
 PLATE NO. 9

REDUCED

Production Photos

Act I; Scene I



Act II: Scene I



Intermission into Act II



Act II; Scene VI



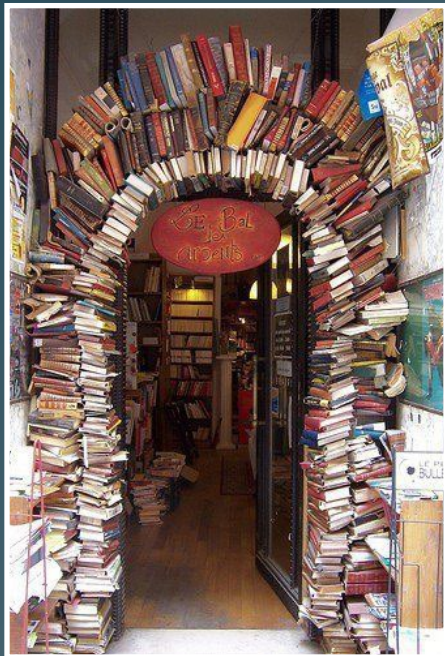
MATILDA

Children's Musical Theater, San Jose
Montgomery Theater | 2019

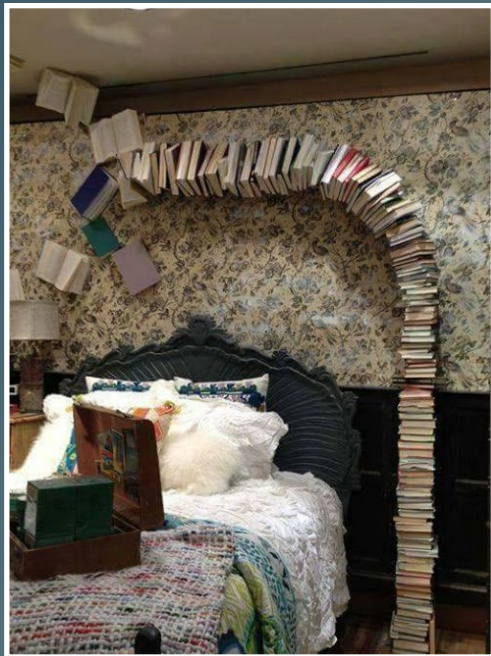
Selected Research Imagery



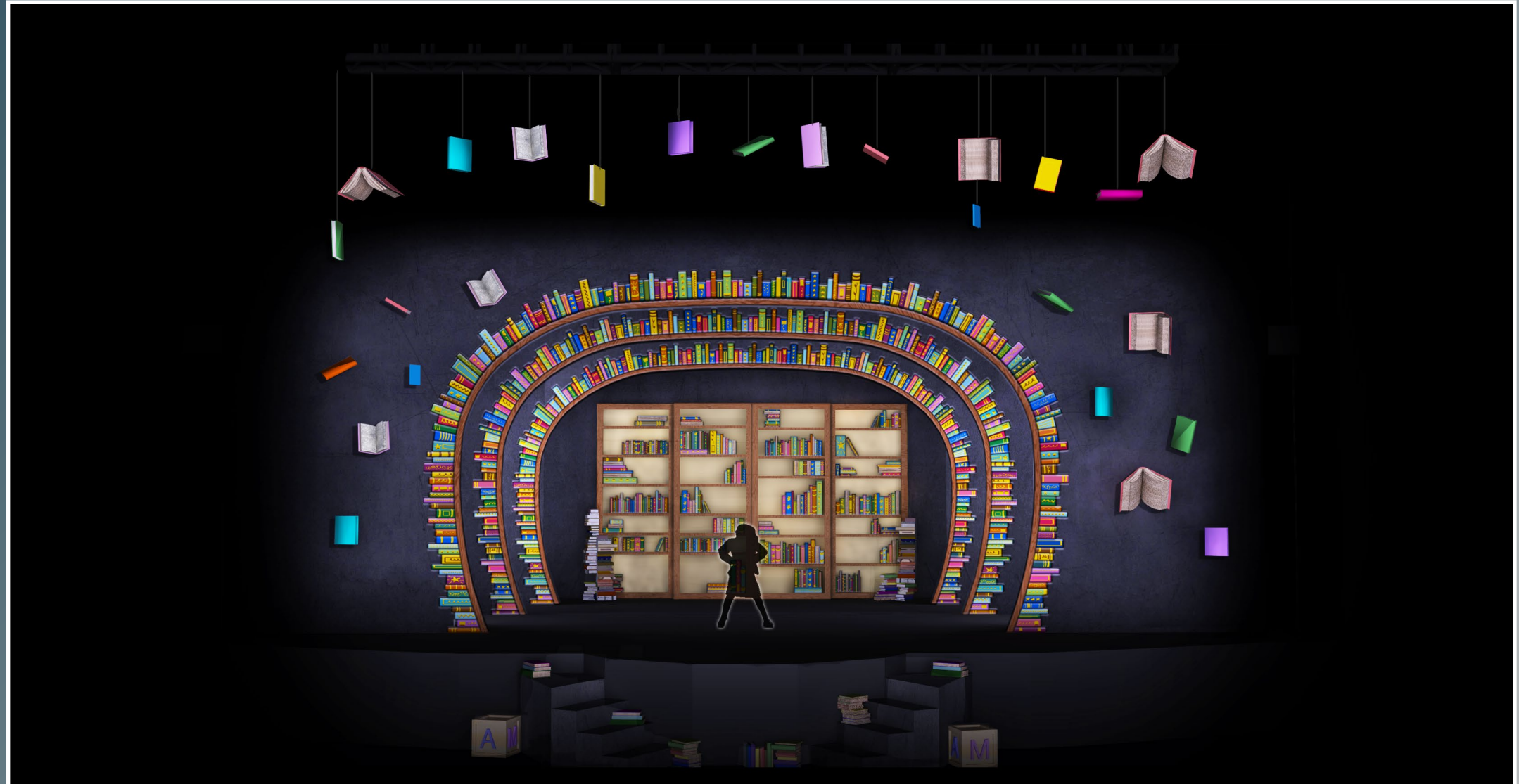
The Last Bookstore in Los Angeles, CA



Sculptural Book Art



SketchUp Model Podium Rendered with Photoshop



Matilda - General Look
CMTSJ
Director: Kevin Hauge
Scenic Designer: Victoria Vitola

Book Graphics Digitally Painted

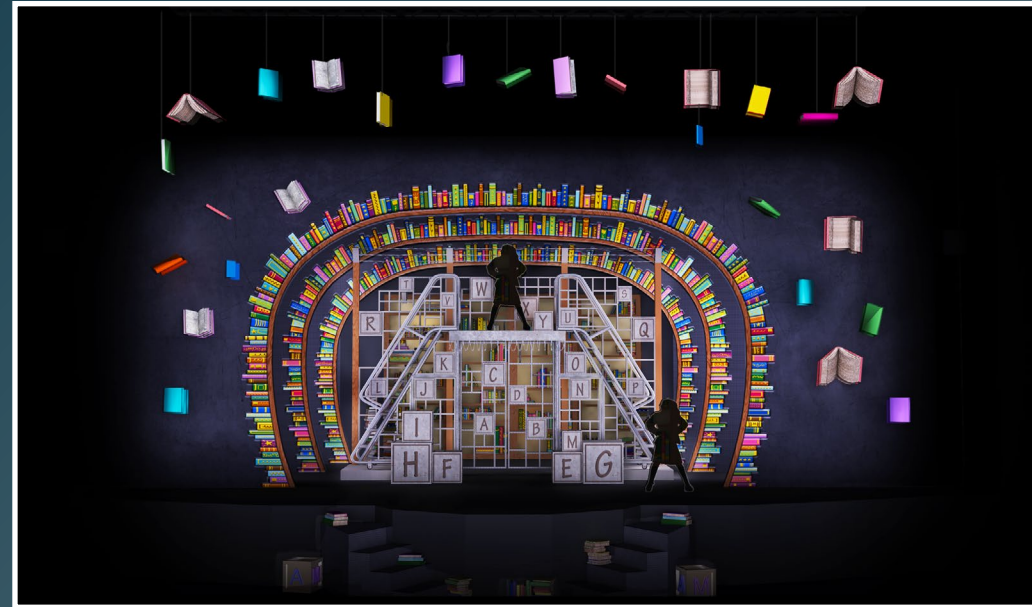


A genius little girl, who loves to read, discovers she has a magical powers!
She uses her gift to prove that good always overcomes evil!



Director | Kevin R. Hauge
Production Manager | Josh Rose
Scenic Designer | Victoria Vitola
Technical Director | Joel Heinschel

Selected Final SketchUp Model Photos (Podium Rendered with Photoshop)



Drafting Sample (Modeled & Drawn in Vectorworks 3D)

2 SCHOOL GATE UNIT FRONT ELEVATION
SCALE: 1/2" = 1'-0" (AS NOTED)

NOTE: FRAMING HIGHLIGHTED PURPLE IS ON DOWNSTAGE SIDE OF UNIT

1 SCHOOL GATE UNIT GROUND PLAN
SCALE: 1/2" = 1'-0"

A SCHOOL GATE SECTION A
SCALE: 1/2" = 1'-0"

3 SCHOOL GATE ISO VIEW

REDUCED

Annotations include: 3 STRANDS OF BARBED WIRE ON TOP, SEE 14 FOR RESEARCH; COILED BARBED WIRE; 3 CUBES COLOR CODED FOR SHOP REFERENCE, SEE 14 FOR SIZE KEY; ADD FACING TO ROLLING PLATFORMS; GATE DOORS HOVER OFF OF GROUND; COILED BARBED WIRE ON FACING OF UPPER PLATFORM; ROWS OF BARBED WIRE.

DRAWING: SCHOOL GATE UNIT		REVISIONS:	
SCALE: 1/2" = 1'-0" (AS NOTED)	DIRECTOR: Kevin R. Hauger	DATE: 1/18/10	DESIGNER: Victoria Viola
DATE: 1/18/10	PROJECT: Children's Musical Theatre Sun Jose	DATE: 1/18/10	DESIGNER: Victoria Viola
SCALE: 1/2" = 1'-0"	PROJECT: Children's Musical Theatre Sun Jose	DATE: 1/18/10	DESIGNER: Victoria Viola
SCALE: 1/2" = 1'-0"	PROJECT: Children's Musical Theatre Sun Jose	DATE: 1/18/10	DESIGNER: Victoria Viola
SCALE: 1/2" = 1'-0"	PROJECT: Children's Musical Theatre Sun Jose	DATE: 1/18/10	DESIGNER: Victoria Viola

Victoria Viola
(813) 509-5736
viviola@ms.com

The client represents all necessary and construction regulations with this drawing. The designer does not assume responsibility for construction or safety of any assembly, structure, or equipment. All work must conform with all federal, state, and local fire and safety codes.

Production Photos

Act I; Scene II - Matilda's Room



Act II: Scene IV - "Rebellion"



Act II; Scene VII - "Revolting Children"



Act II; Scene II - "When I Grow Up"



Production Photo



ANNA IN THE TROPICS

The Don Powell Theatre | San Diego State University
2018

Director | C.J. Keith
Scenic Designer | Victoria Vitola
Lighting Designer | Sarah Schwartz
Costume Designer | Beatrice Collins
Technical Director | Jessica Gilliard
Sound Designer | Christina Martin

Selected Research Imagery

Digitally Painted Projected Show Curtain (with WACOM Tablet)



La Mega Cigar Factory, Tampa, FL; Built 1899



Lector in Tampa Cigar Factory; c. 1930



Cigar Stations, Ybor City Museum



Magical realism and poetic language collide in a 1920's cigar factory to tell a story about love and family.

Digitally Painted Rendering (with WACOM Tablet)



1/4" Scale Model



Production Photos

Intermission into Act II



Act II; Scene III



Production Photo

Act I; Scene III



Photo Credit: Sarah Schwartz

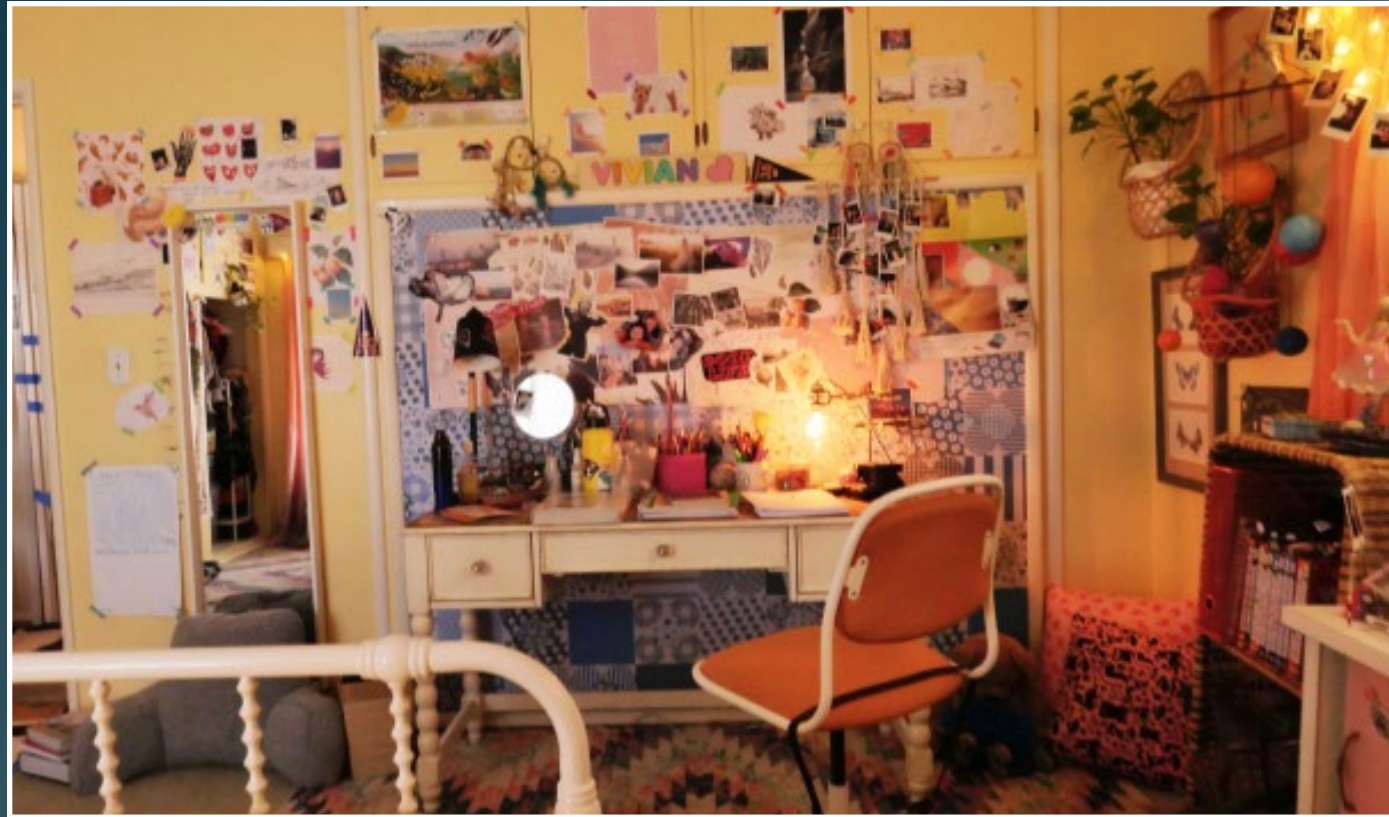
PRODUCTION DESIGN

MOXIE! (A NETFLIX ORIGINAL FEATURE)

Art Department Production Assistant

A modern day high school girl discovers her mom was part of the 1990 Riot Grrrl Movement, and is inspired to start her own feminist revolution!

Director | Amy Poehler
Production Designer | Erin Magill
Art Director | Rebekah Scheys
Asst. Art Director | Alanna Demplewolf-Barrett
Set Decorator | Kim Wannop
Prop Master | Gay Perello



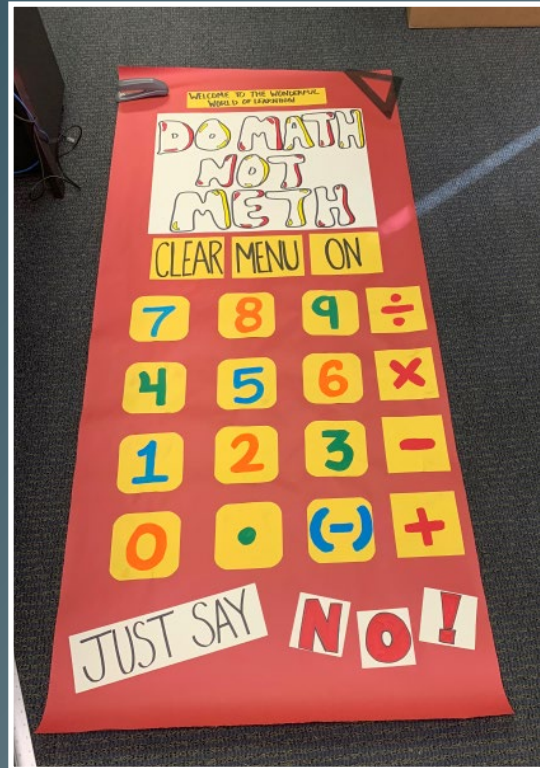
Set:
Vivian's Bedroom
*All paper collages,
sticker placement, desk
drawings, and
corkboard decoration
done by V. Vitola*



MOXIE! (A NETFLIX ORIGINAL FEATURE)

Art Department Production Assistant

Director | Amy Poehler
Production Designer | Erin Magill
Art Director | Rebekah Scheys
Asst. Art Director | Alanna Demplewloff-Barrett
Set Decorator | Kim Wannop
Prop Master | Gay Perello



MADE BY PNW LOCKER CO. SEATTLE, WA
191
SEATTLE - PORTLAND - BOISE



Set: Rockford High School:

All hand made club posters, gack flyers, and locker graphics by V. Vitola

Set: Mr. Davies' Classroom

Set Dressing placed by K. Wannop, E. Mgaill, and V. Vitola

Behind The Scenes Set Photos: Music Video Set #1 & #2



Set Graphics (Created in Illustrator)

Community Ice Cream
"It's Mellow & Rich"
Bricks. 20¢ each Slurp!
2 for 35¢.

If it's **Pure Spring**
it's good!!
Around the Corner!



Production Stills



Music Video Set #1



INT. Sound Stage - Music Video Set #1



Music Video Set #2



INT. Sound Stage - Music Video Set #2

THE DINNER PARTY

San Marcos, California
2019

Writer & Director | Matthew Bencon
Director of Photography | Lucas Williams
Production Designer | Victoria Vitola

Production Stills

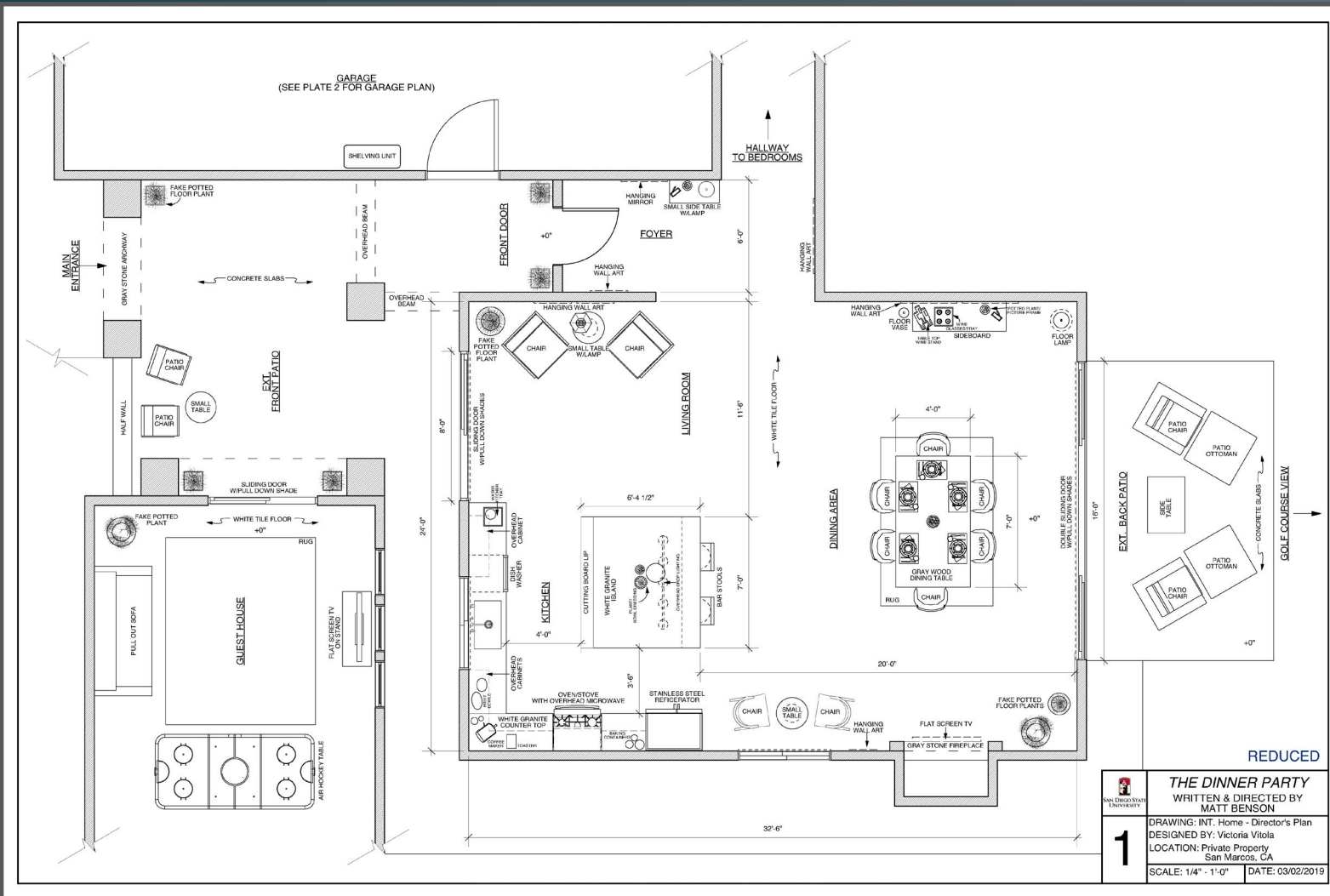
INT. Dining Room



INT. Kitchen



Selected Drafting (Drawn in Vectorworks)



When an uninvited guest shows up, a couple's dinner party becomes dangerously violent.

Production Stills
INT. Dining Room



RAISING ARIZONA

Theoretical Design - San Diego State University
2017

Keyframe Podium Rendering



A 1970's trailer is the perfect setting for this desert farce about an unlikely couple's adventure to parenthood.

Selected Research Imagery



SketchUp Model



AMADEUS

Theoretical Design - San Diego State University
2017

Keyframe Podium Rendering



The feud between Wolfgang Amadeus Mozart and Antonio Salieri fuels this 18th century tale, set in lavish Vienna, Austria.

Selected Research

Selected Drafting (Drawn in SketchUp Layout)



Hôtel de Tessé, Paris, 1768-72



The Paar Palace, Vienna, 1765-72



Palais Bartolotti in Vienna, 1720



SPECIAL PROJECTS

SEA WORLD, SAN DIEGO

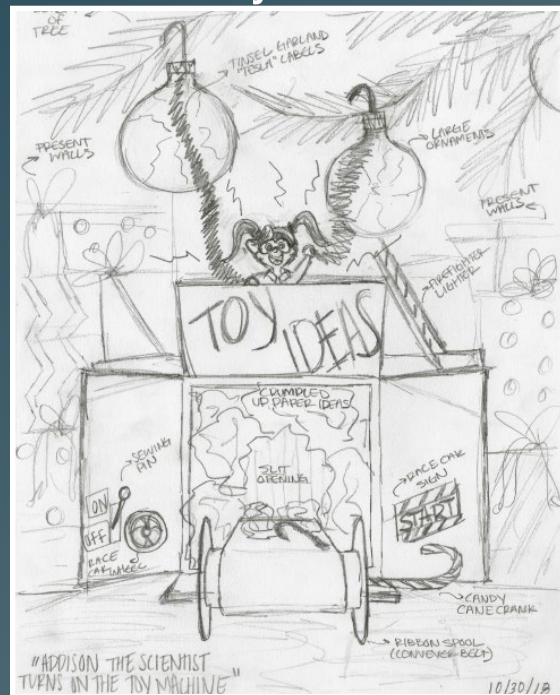
THE MAGIC TOY STORE

Theoretical Collaboration with SDSU

Selected Research Imagery



Preliminary Hand Sketches



Team Members: Brooke Nicole Kesler, Stephanie Lasater, Sarah Schwartz, and Victoria Vitola

Digitally Painted Rendering (Photoship with WACOM Tablet)



THE MAGIC TOY STORE
SCENIC RENDERING
SEA WORLD, SAN DIEGO \ NAUTILUS AMPHITHEATER

ZOOMED IN TOY STORE
BROOKE NICOLE KESLER, STEPHANIE LASATER,
SARAH SCHWARTZ, VICTORIA VITOLA

TREATMENT:

Sometime and somewhere in a small village, a toy maker finds himself struggling to finish all the toys for the children in time for Christmas Day. That night, a magical miracle take place bringing his toys to life! With their help, enough toys are made and Christmas is saved!

LOCATION:

The Nautilus Amphitheater, Sea World, San Diego

- This project was conceived by the San Diego State University Team and created in collaboration with Sea World, San Diego's Entertainment Vice President, Rick Schuiteman.
- This project is only theoretical, and was not realized in anyway