



VICTORIA VITOLA

SCENIC & PRODUCTION DESIGN



# JAMES & THE GIANT PEACH

The Don Powell Theatre | San Diego State University  
2019

Director | Stephen Brotebeck  
Musical Director | Robert Meffe  
Scenic Designer | Victoria Vitola  
Costume Designer | Brooke Nicole Kesler  
Lighting Designer | Sarah Schwartz  
Projection Designer | Scott Boynton  
Sound Designer | Nolan Voge  
Technical Director | Dustin Ozment



Photo Credit: Ken Jacques

A bizarre and magical story of a young boy's adventure on a giant peach with his new life-size insect friends!



# Selected Research Imagery



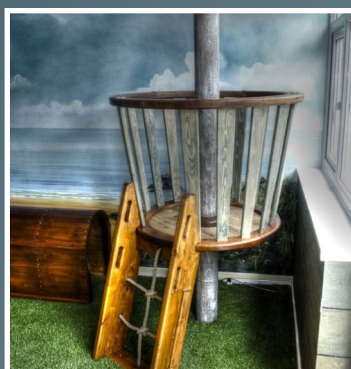
The House that Jack Built by Gary Walton



Children's Forts

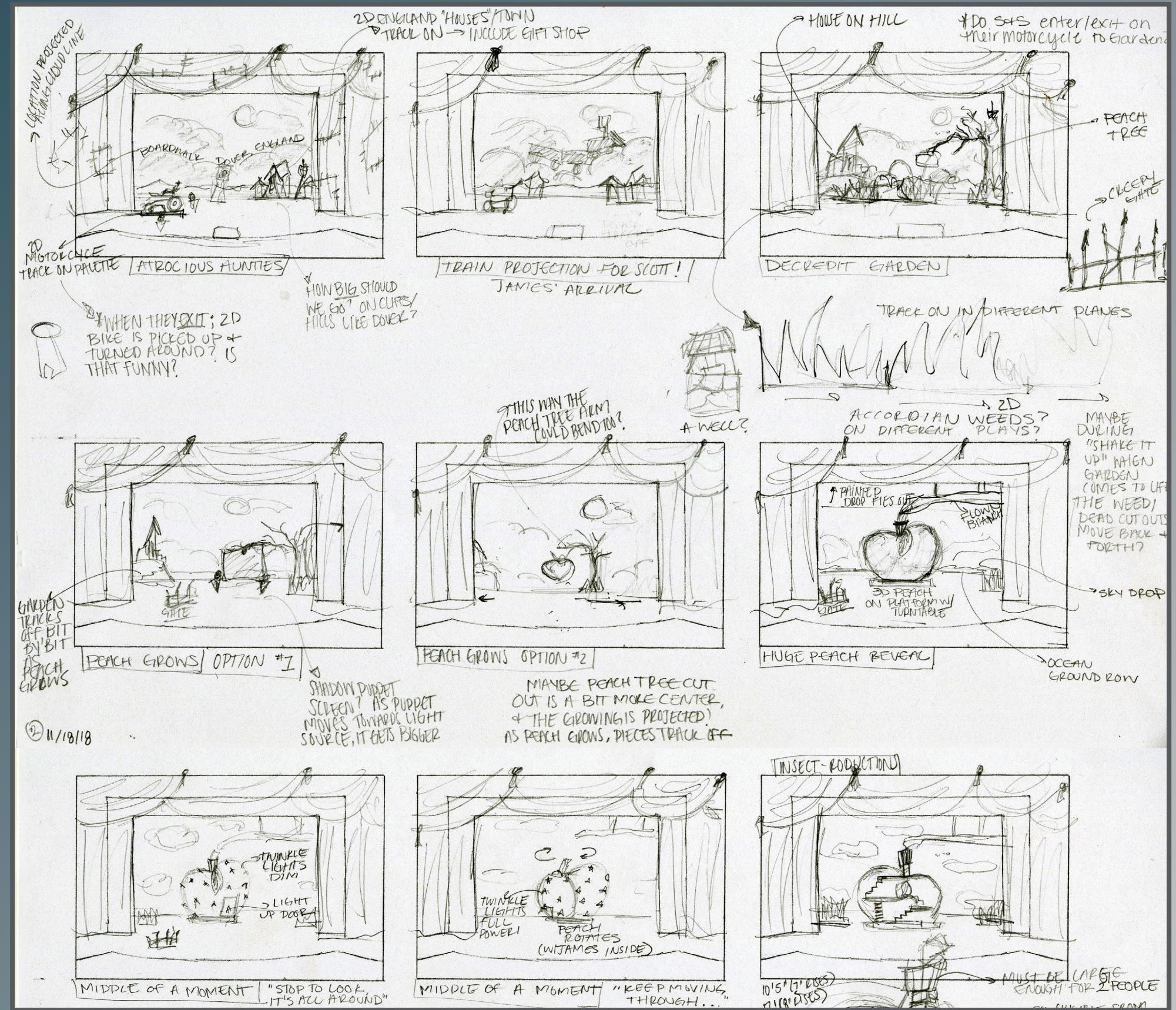


Lotte Reinger Shadow Puppetry from The Fairy Tale Films



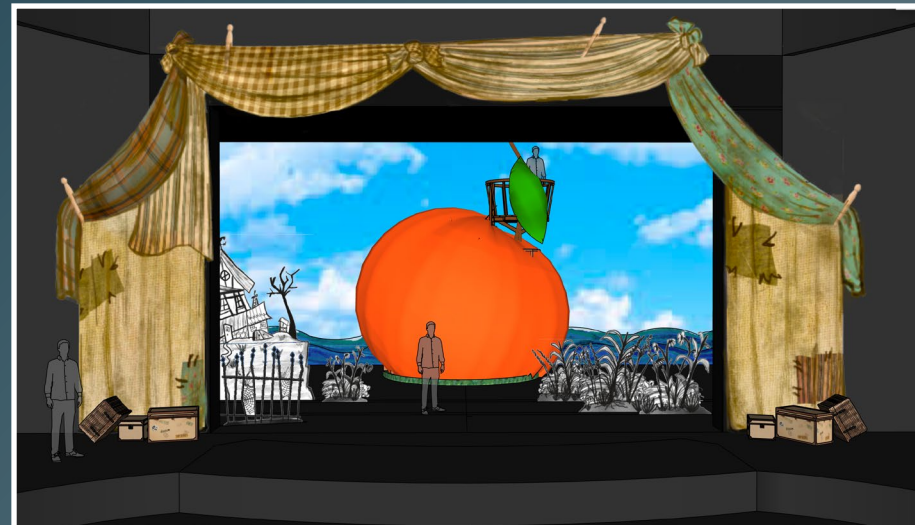
Children's Tree Houses

# Selected Preliminary Storyboard Sketches





# Preliminary SketchUp Model



# 1/4" Model





# 1/2" Peach Model

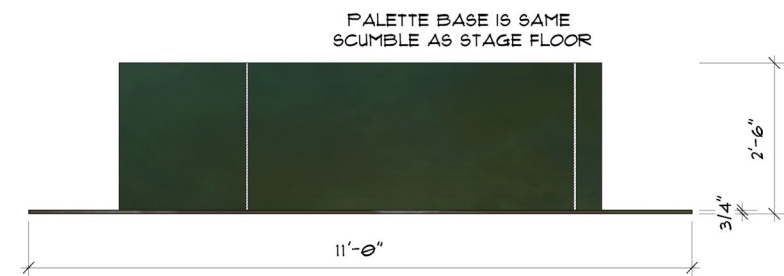
## Selected Paint Elevation (Hand Drawn & Digitally Painted in Photoshop with WACOM Tablet)



2 SL BOARDWALK CUT OUT ELEVATION



1 SR BOARDWALK CUT OUT ELEVATION



3 AUNT'S HOUSE FRONT ELEVATION

NOTES:  
 - ALL EDGES OF CUT OUTS CARRY OVER COLOR FROM FRONT  
 - UNITS HAVE SATIN FINISH

San Diego State Presenters		SHEET NO.	
presents			
<i>James &amp; the Giant Peach</i>			
DRAWING:	BOARDWALK CUT OUTS/AUNT'S HOUSE		
DIRECTOR:	Stephen Brotebeck	4	
DESIGNER:	Victoria Vitola		
PAINT CHARGE:	Kristen Flores	12	
SCALE:	NOT TO SCALE	DATE:	02/15/19

**REDUCED**



## Prop Fabrication/Scenic Painting Examples

### “Magic Bag” created by V. Vitola

*Created from a children’s pop-up play tube, covered with burlap, with sewn on patches, and drawstring ribbon.*



### “New York” created by V. Vitola

*CNC plywood painted with light box windows. Peach carved from foam, papier-mâché with muslin, and then painted*



## Production Photos

### Act II: Scene I



### Act II; Scene VI





# ANNA IN THE TROPICS

The Don Powell Theatre | San Diego State University  
2018

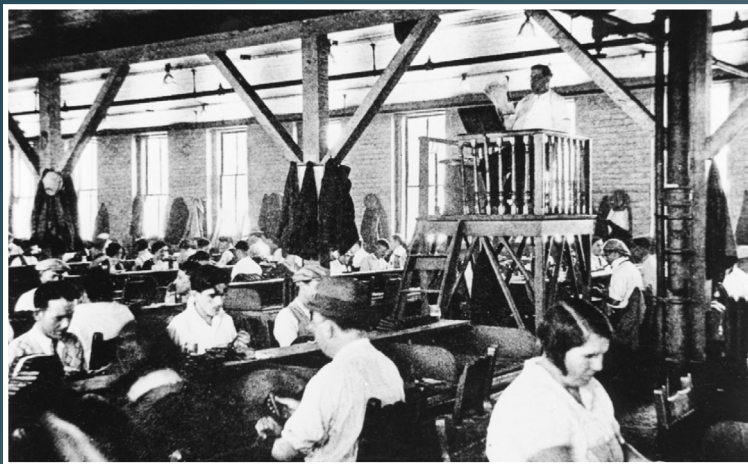
Director | C.J. Keith  
Scenic Designer | Victoria Vitola  
Lighting Designer | Sarah Schwartz  
Costume Designer | Beatrice Collins  
Technical Director | Jessica Gilliard  
Sound Designer | Christina Martin

Selected Research Imagery

Digitally Painted Projected Show Curtain (in Photoshop with WACOM Tablet)



La Mega Cigar Factory, Tampa, FL; Built 1899



Lector in Tampa Cigar Factory; c. 1930



Cigar Stations, Ybor City Museum



Magical realism and poetic language collide in a 1920's cigar factory to tell a story about love and family.



Digitally Painted Rendering (with WACOM Tablet)



1/4" Scale Model



Production Photos

Intermission into Act II



Act I; Scene III

Photo Credit: Sarah Schwartz





# Prop Fabrication/Scenic Painting Examples

## Cigar Stations

Desks built by D. Ozment, painted by E.Small and V.Vitola  
Leaves, Chavetas (Cutting Knives), Molds, Cigars, and Cutting boards  
created and painted by E. Small and V. Vitola



## Lanterns

Paper Lanterns store bought and then papier-mâché with napkins and tissue paper.  
Lanterns strung on rope, with color changing LEDs stands.



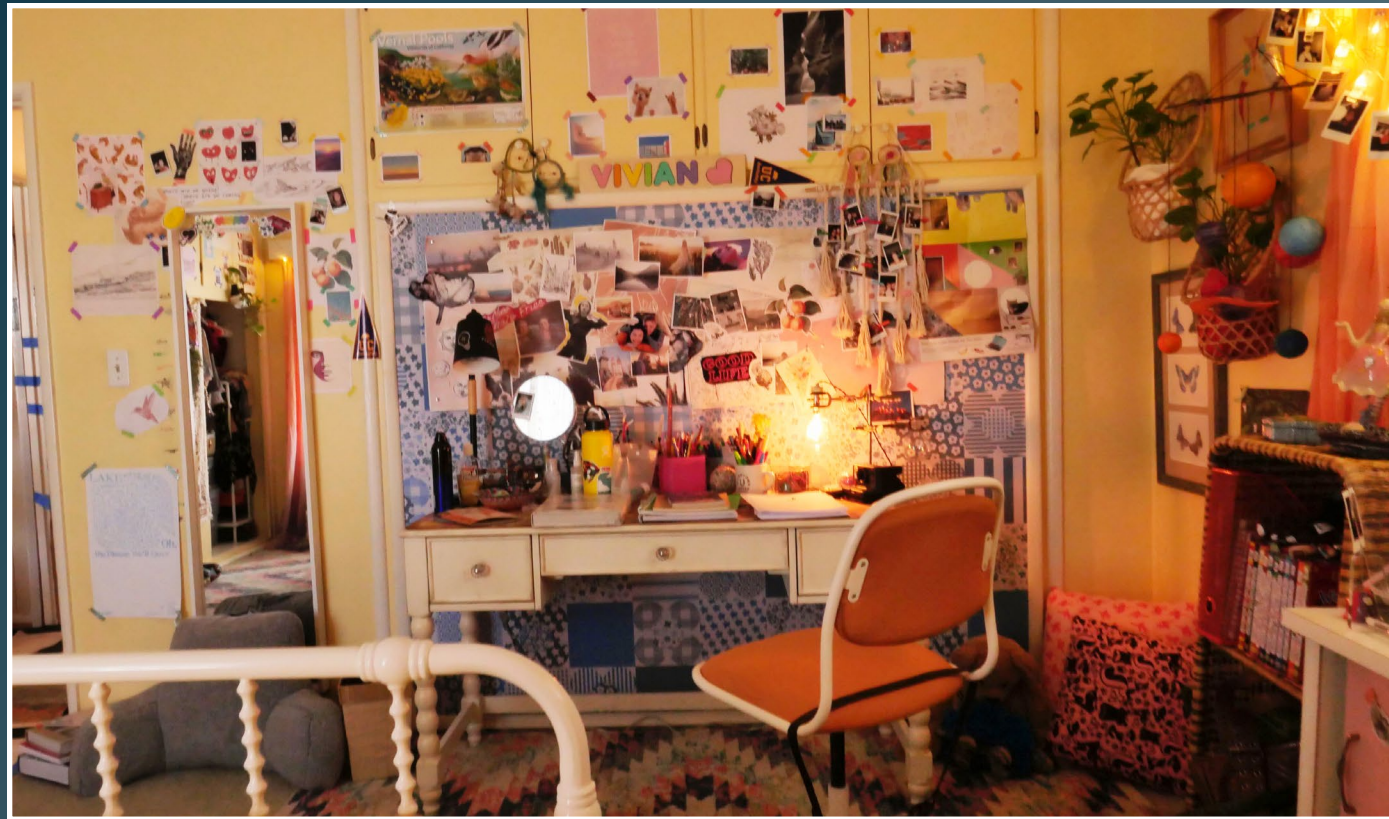


# MOXIE! (A NETFLIX ORIGINAL FEATURE)

Art Department Production Assistant

A modern day high school girl discovers her mom was part of the 1990 Riot Grrrl Movement, and is inspired to start her own feminist revolution!

Director | Amy Poehler  
Production Designer | Erin Magill  
Art Director | Rebekah Scheys  
Asst. Art Director | Alanna Demplewolf-Barrett  
Set Decorator | Kim Wannop  
Prop Master | Gay Perello



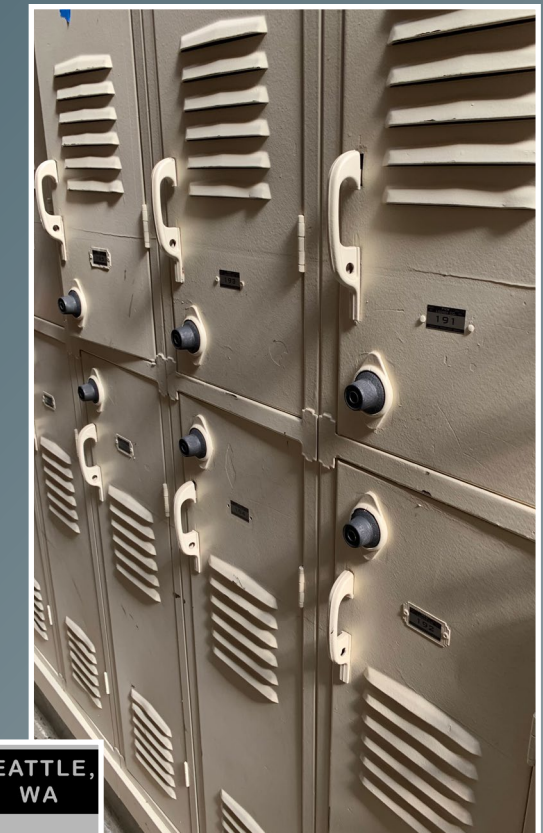
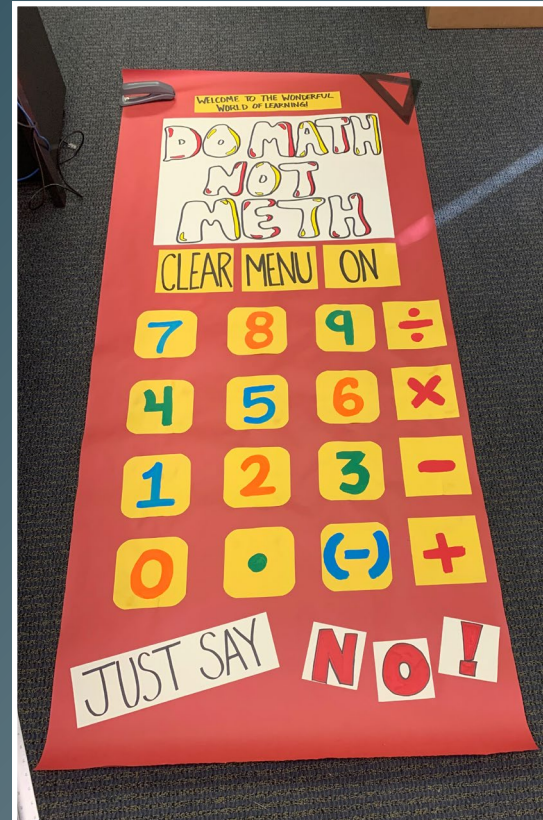
**Set:**  
**Vivian's Bedroom**  
*All paper collages, sticker placement, desk drawings, and corkboard decoration done by V. Vitola*





# Set: Rockford High School

All hand made club posters, gack flyers, and locker graphics by V. Vitola



Locker graphic created in Illustrator and printed on mettalic vinyl

MADE BY PNW LOCKER CO. SEATTLE, WA  
**191**  
SEATTLE - PORTLAND - BOISE

Set: Mr. Davies' Classroom  
Set Dressing placed by K.Wannop, E. Mgaill, and V. Vitola



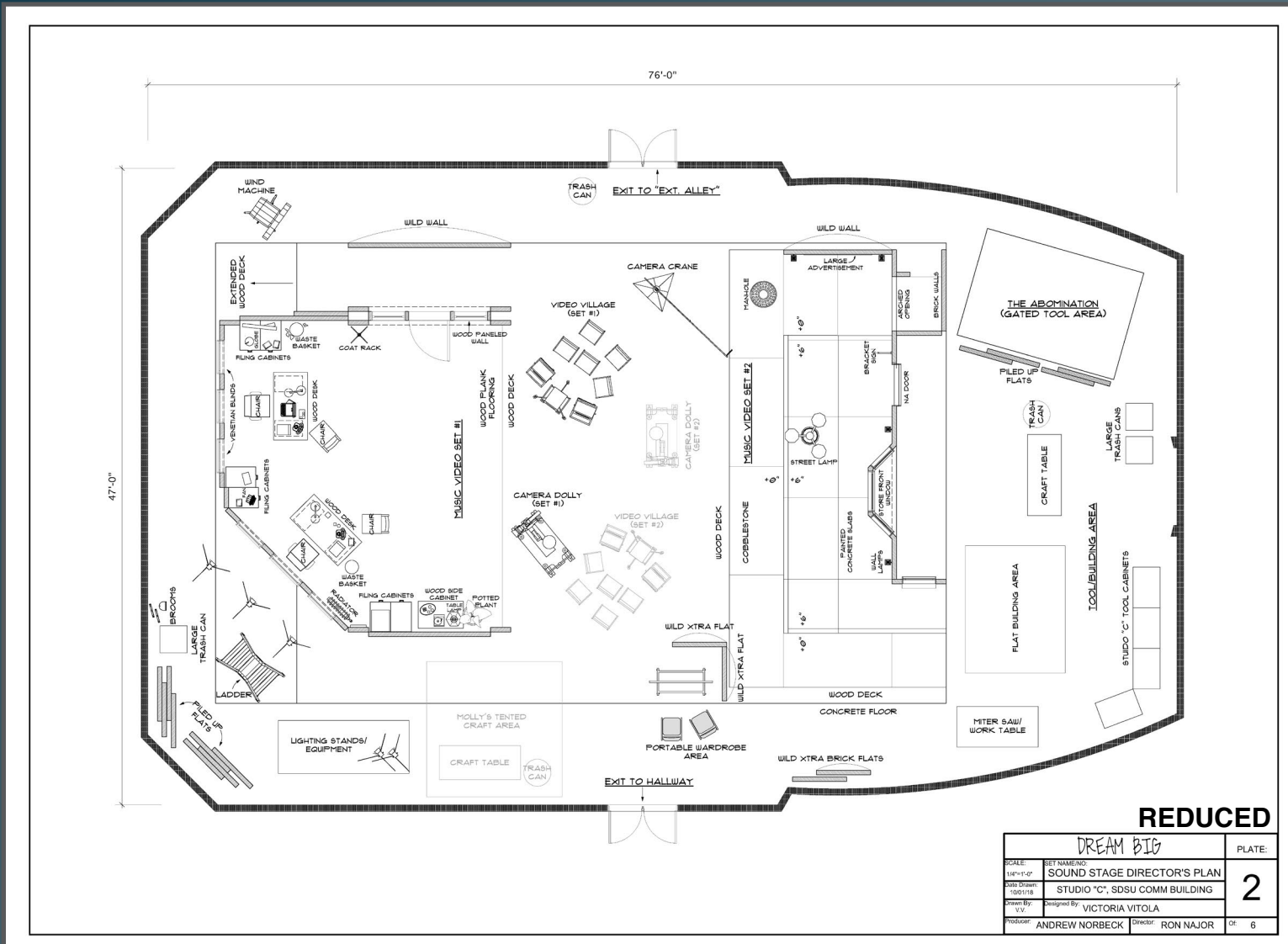
# DREAM BIG (PILOT)

Studio C | San Diego State University  
2018

Director | Ron Najor  
Producer | Andrew Norbeck  
Director of Photography | Lucas Williams  
Production Designer | Victoria Vitola

P.I. Office and 1950s Street, Music Video Sets (SketchUp Podium)

Studio Director's Ground Plan (Drawn in Vectorworks)



*Dream Big* follows a young Production Assistant through his first day on a Music Video Set.  
The Sound Stage itself was just as important as the sets built on it!



# Behind The Scenes Set Photos: Music Video Set #1 & #2

All set dressing sourced, bought, rented, and placed by V. Vitola; Scenic painting by J. Amador and V. Vitola



Set Graphics (Created in Illustrator)



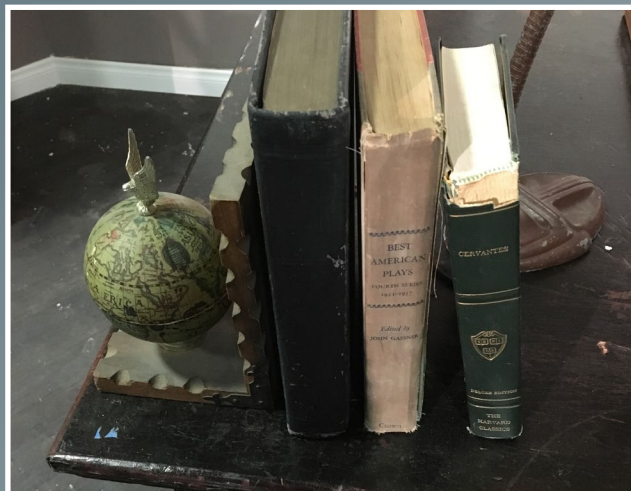
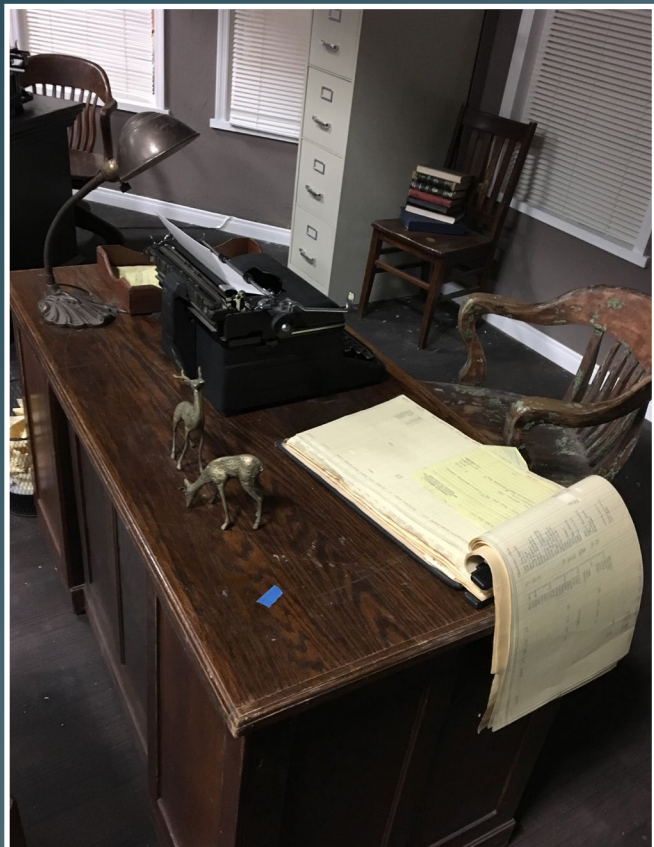


# Set: Music Video Set #1 - P.I. Office

All set dressing sourced, bought, rented, and placed by V. Vitola



Wide Production Still





# THE DINNER PARTY

San Marcos, California  
2019

Sample/Research Board

Writer & Director | Matthew Bencon  
Director of Photography | Lucas Williams  
Production Designer | Victoria Vitola

Production Stills

INT. Dining Room



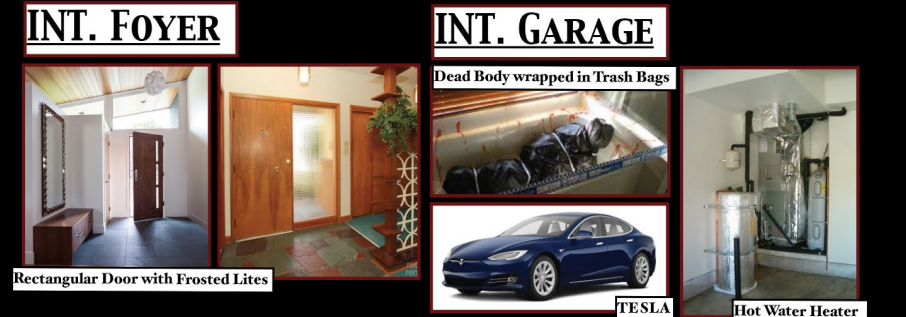
INT. Kitchen



## THE DINNER PARTY

WRITTEN & DIRECTED BY MATT BENSON

INT. DINING ROOM/KITCHEN



## FOOD DISPLAYS



## COLOR PALETTE



DESIGNED BY VICTORIA VITOLA

When an uninvited guest shows up, a couple's dinner party becomes dangerously violent.

All set dressing sourced, bought, rented, and placed by V. Vitola, including furniture and edible food props



Production Stills  
INT. Dining Room





# PROPERTIES ARTISAN WORK

## *Much Ado About Nothing*

The Old Globe, San Diego

Davies Festival Theatre

Supervisor | David Buess

Designer: John Lee Beatty

## Upholstered Chairs



*Chair Frames pulled from stock and stripped down. New Plywood Seats were added to the Chair Frames and then Edge Roll was stapled along the perimeter. The seat foam was cut using a paper template and given 45 degree edges for a nice transition into the Edge Roll. A Muslin base was upholstered on first to shape the seat. The upholstery fabric was then evenly stapled over top. Lastly, Gold Gimp Trim was hot glued and stapled around the perimeter.*



# *Much Ado About Nothing*

The Old Globe, San Diego

Davies Festival Theatre

Supervisor | David Buess

Designer: John Lee Beatty

## Reversible Pulpit Flower Arrangements



*Middle Separator created out of Fence Wire and Wooden Rod, and then inserted into Floral Foam. Pulpit Wicker Basket Spray Painted Black and Silver with glitter added on top. Flowers trimmed, arranged, and floral wired into place. Hand made bow and ribbon added for an extra special touch. Wicket Baskets cut down fo decrease height during technical rehearsals.*



Photo Courtesy of The Old Globe



# ***Benny & Joon: A New Musical***

World Premiere at The Old Globe, San Diego

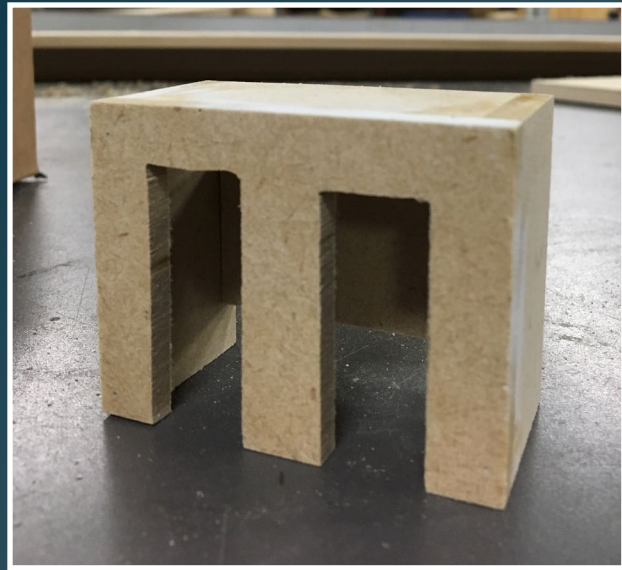
Donald & Darlene Shiley Stage

Supervisor | David Buess

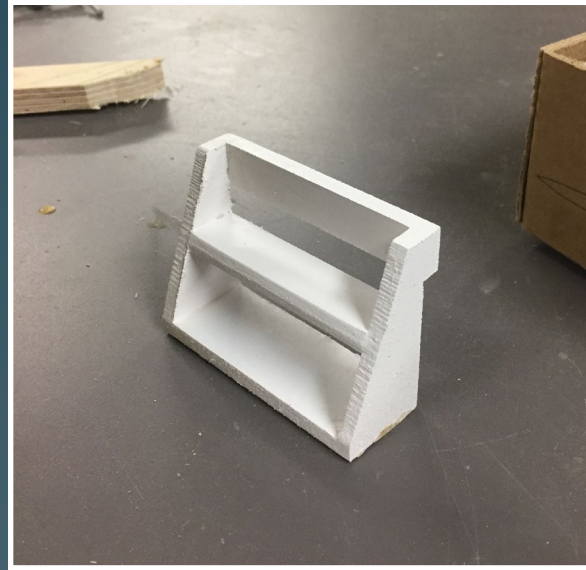
Designer: Dane Laffrey

## Large Train Model Details

Built in collaboration with Jacob Sampson



Vent Detail, MDF



Stair Detail, MDF



Wheels with beveled edge, MDF



Railing Detail, dowels



Window Detail, cut from matte board



Finished Train



Show Photo by Jim Cox